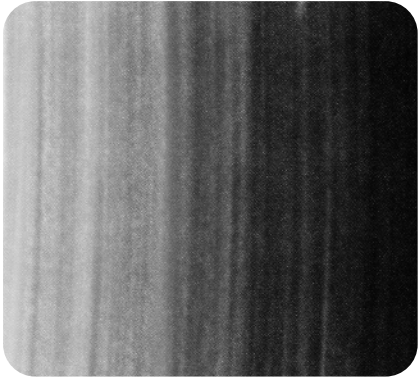


### Tone

How light or dark something is.



### Texture

The way that something feels when it is touched. For example, fluffy.



### Composition

Arranging different materials together and sticking them to a surface.



### Artists

- Sarah Graham.
- Nicola McBride.
- Joel Penkman.

### Shadow

A dark shape that appears when something blocks the light.



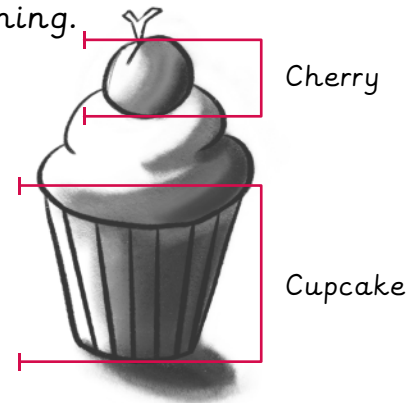
### Highlight

A bright spot or area that makes something stand out or look shiny.



### Proportion

How big one element of an artwork appears compared to the whole thing.



### The four rules of shading

1. Use the side of the pencil.
2. Work in one direction.
3. Press evenly.
4. Leave no gaps.

